



# TEAM PLAYERS



Annual Report 2022



# CONTENTS

Editorial .....	2
Projects .....	4
Team Players .....	24
BUNTE Highlights .....	32
Management Report .....	40
Annual Financial Statements .....	50
Locations/Publication Details .....	56

# TEAM PLAYERS

We are BUNTE – a tradition-rich company with a strong team. The large family that is the BUNTE Group in the meantime counts over 2,000 employees. They give our projects a face and are at the focus of everything we do. The implementation of our complex projects depends on our employees working together closely and successfully. True team players!

As team players, we are receptive to new ideas and apply our know how to developing optimum project-specific and customer-oriented solutions. We work efficiently and always with sustainable solutions in mind.

Whether infrastructure construction, civil engineering, hydraulic engineering and bridge construction, or turnkey construction as well as project development, we can look back on 150 years of BUNTE. During this time, we have placed the future of the company on a secure foundation through transparent and cooperative partnership. Today, BUNTE stands for diversity. This is the best prerequisite for addressing and mastering future challenges – together as team players in the BUNTE family.





## Dear shareholders, partners and employees,

The year 2022 marked our 150th anniversary, which we celebrated with numerous activities throughout the year. We felt it would be particularly appropriate to take advantage of this anniversary as an opportunity to support the socially disadvantaged and those in need of help through various fundraising initiatives.

This has tradition at BUNTE and underscores our approach as a sustainable company.

Unfortunately, 2022 was also characterised by hopefully the final phase of the coronavirus pandemic and the outbreak of war in Ukraine. This war, with its economic consequences and repercussions, also impacted the construction industry in Germany, and BUNTE was no exception. It is all the more remarkable therefore that we were able to achieve a strong operating result despite these challenging conditions and can now look back on a very successful business year. With consolidated gross operating revenue of €820 million, we once again significantly increased sales. At over €1.4 billion, our orders on hand remain at a very high level.

Such outstanding business figures are only possible through teamwork and real team players. The BUNTE team of in the meantime 2,000 employees demonstrated this in exemplary fashion. With this strong team behind us, we can look to the future with confidence and optimism.

By changing our legal form from a GmbH & Co. KG to a Societas Europaea (SE) & Co. KG, BUNTE is taking account of the company's success at home and abroad. The legal form of a public limited company under European law offers us the best possible framework conditions to continue along the path we have so successfully taken so far going forward.

By strengthening our portfolio through targeted investments, expanding our activities in the area of digitalisation and introducing measures to improve sustainability, you, dear BUNTE team, played an important part in BUNTE's success. This was possible thanks to your unwavering commitment and active contribution. For this, we express our warmest thanks to you, our team players.

On behalf of the whole Management Board, my sincere thanks also go to our valued shareholders for your continued trust.

Yours,  
**Frank Schreiber**  
CEO

» **SUCH OUTSTANDING  
BUSINESS FIGURES ARE ONLY  
POSSIBLE THROUGH TEAMWORK  
AND REAL TEAM PLAYERS.** «



From left: Dipl.-Kfm. Jan Schütz,  
Dipl.-Ing. Helmut Renze (Deputy CEO),  
Dipl.-Ing. Frank Schreiber (CEO),  
Dipl.-Ing. Helmut Bohse, Dipl.-Ing. Andreas Broll



INFRASTRUCTURE  
CONSTRUCTION

# In the fast lane

In the infrastructure construction business area, almost all branches benefit from the broad range of services when it comes to implementing infrastructure projects. This traditional core business at BUNTE consolidates all activities from earthwork, the construction of motorways, national primary roads, state roads as well as airports and development work through to railway engineering. This is supplemented by logistics and pipeline construction.

Close dovetailing of individual business units allows us to realise construction projects as joint undertakings. Careful coordination among all team members, from cost calculator to site manager to skilled on-site personnel, forms the basis for optimum realisation of each project.

Our team players are supported by state-of-the-art equipment and machinery. As part of our intelligent team set-up, we make use of Building Information Modelling (BIM) and as a basic principle invest in modern processes and logistics strategies. This allows us to fully capitalise on our high standards in terms of quality, technology, sustainability and efficiency.





### IT'S ALL IN THE MIX

Numerous business units are involved in the realisation of our A3 federal motorway availability model and A1 federal motorway functional construction contract megaprojects. Pictured here is our crew for **laying mastic asphalt paving** on the **A3**. The project encompasses engineering, financing, expansion from four to six lanes, operation and maintenance of the 76 km long section of the A3 motorway between the Biebelried and Fürth/Erlangen interchanges.

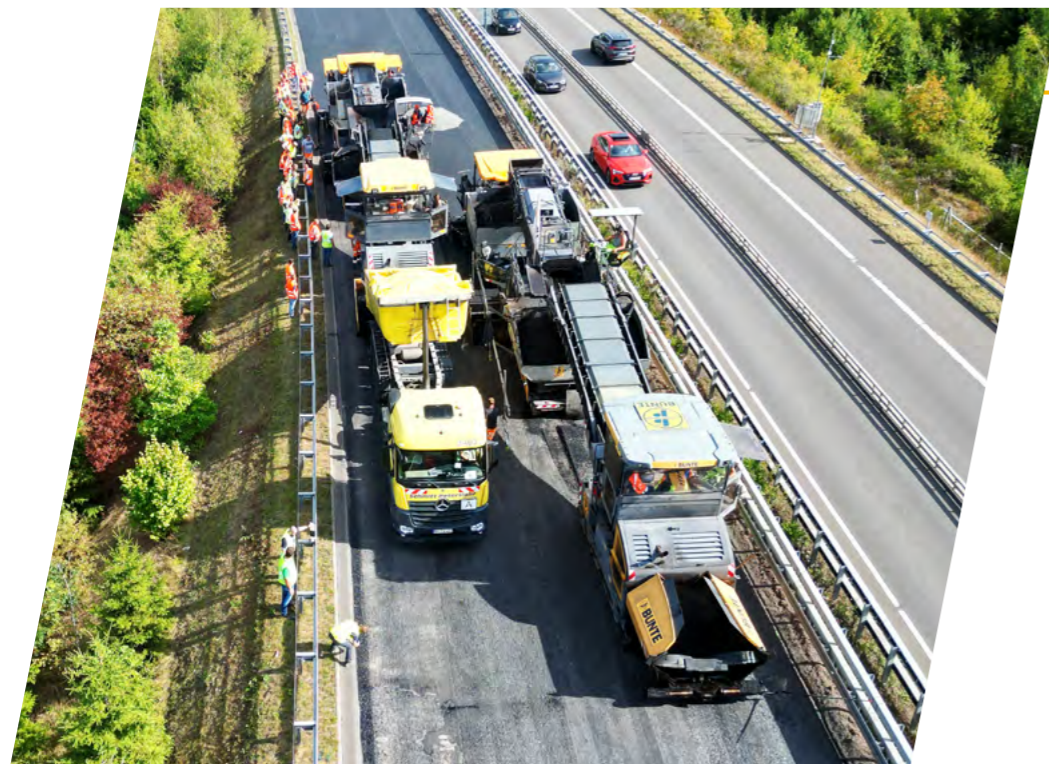


### HIGHEST QUALITY AND SAFETY STANDARDS

The **NATO Wittmundhafen airfield** joint project of the transport infrastructure construction Weser-Ems and Hanover branches together with SF-Bau Weser-Ems comprises the reconstruction of the 3 km long runway as well as the building of transport facilities and engineering structures. One stand-out aspect of the project is that all material excavated on site is being reused.

### SAFETY ALL THE WAY

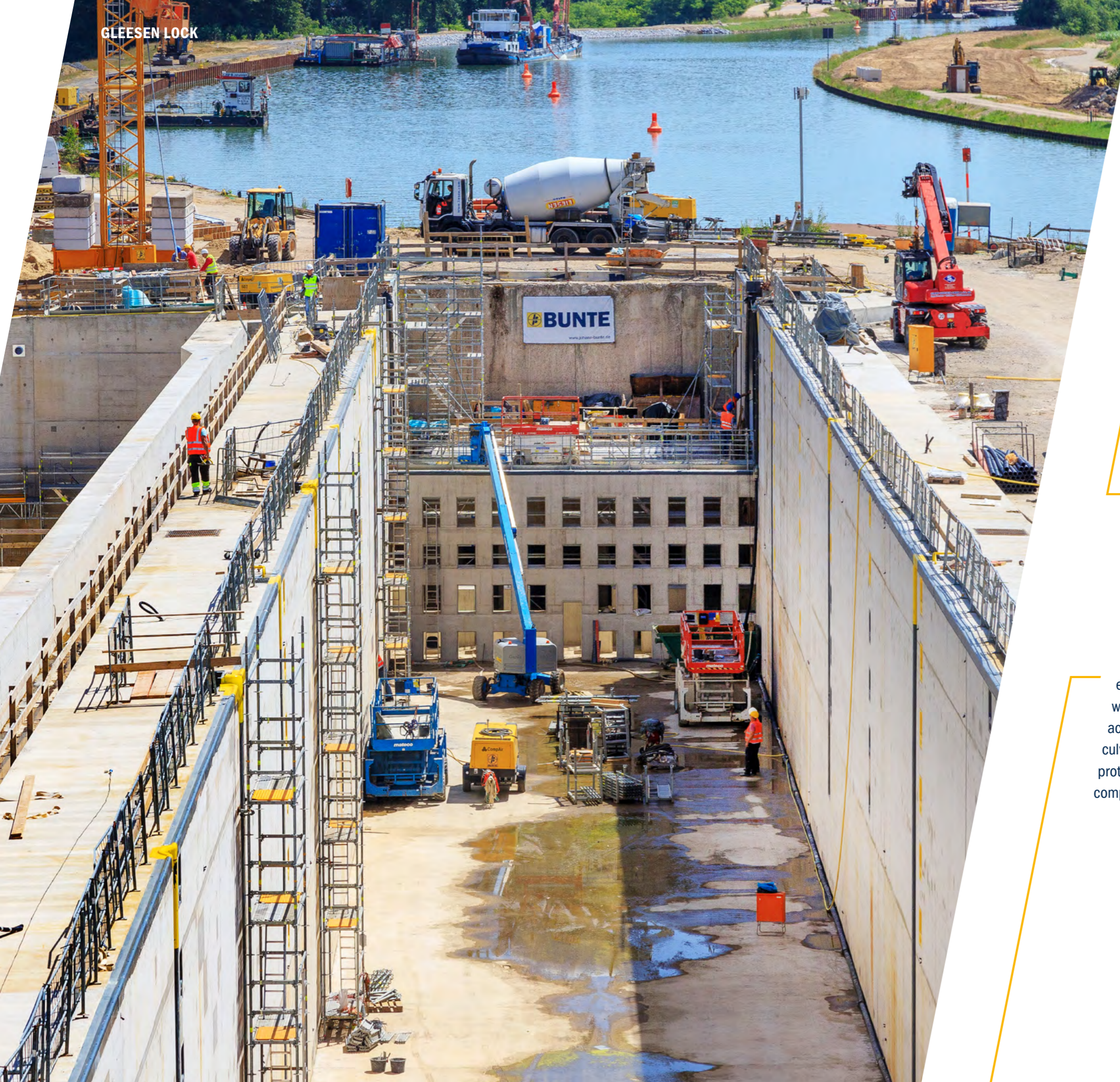
Our expertise in various carriageway surfacing methods is exemplified here with the laying of compact asphalt paving. The paving team from the Essen transport infrastructure construction branch is carrying out a resurfacing project on the **B54 Kreuztal primary road**.



### PERFECTLY SYNCHRONISED

The Berlin transport infrastructure construction branch oversees the optimum project execution for the construction and upgrading of trackbound infrastructure. It is supported by the noise protection and bridge construction business units as is the case on the **Dresdner Bahn VP3** project, the renewal of the 6 km long city rail line between Berlin Südkreuz and Blankenfelde.





CIVIL ENGINEERING

# Every structure is unique

The civil engineering business area combines the highest standards of structural and architectural design. We have secured a leading market position in this business area thanks to a modern machinery pool with a wide range of special equipment and the outstanding expertise of our employees, who as part of our committed, highly qualified and experienced BUNTE team work in perfect synchronisation to deliver convincing team performances.

Complex engineering structures have the capacity to fascinate thanks to their individual design and require interdisciplinary cooperation in the form of integrated civil engineering services. BUNTE's team players achieve this with impressive productivity and adherence to schedules across all material types in hydraulic engineering, lock and culvert construction as well as trough structures and noise protection. All these structures are unique, usually extremely complex and not infrequently once-in-a-century projects.



### HUGE BASIN

The huge basin structure measures 169.5 × 146.5 m and is being built by the Osnabrück transport infrastructure construction branch together with the civil engineering business area. The **Gravenhorst post-sedimentation basin** will in future serve as a downstream purification stage for mine water treatment.



### IMPOSING ARCHITECTURE

The “New Niederfinow Ship’s Hoist” consortium was awarded the building contract for construction of the new **ship’s hoist** by the Berlin Waterway Development Authority (Wasserstraßen-Neubauamt) in 2008. In addition, in 2017, the IWB branch, which as a partner to the consortium had already constructed the trough for the hoist’s elevator as well as the upper outer harbour, was awarded the contract as general contractor for the last major stage in the realisation of the Niederfinow Ship’s Hoist, construction of the 600 m long lower outer harbour.



### WATERWAY EXPANSION

With the preliminary work for the construction of **Rodde lock**, the team from the IWB branch in Ahaus is taking an important step forward. Together with the Gleesen and Venhaus locks, the project forms part of the “new locks along the Dortmund-Ems Canal north” measure.



TURNKEY CONSTRUCTION/PROJECT DEVELOPMENT

# Aiming high

In the turnkey construction business area, a strong BUNTE team of dedicated contacts acts responsibly and cost-effectively. Our team players offer outstanding quality and timely execution for the implementation of integrated solutions. From project development and planning to financing and marketing to turnkey realisation.

Turnkey construction has seen strong development in recent years and has become firmly established in the market. The teams operate from five locations: Leer, Hamburg, Berlin, Stuttgart and Oberhausen. In the area of project development, experienced colleagues generate project financing for marketable real estate as a supplement to construction as a general contractor. Our teams have in-depth and wide-ranging expertise and oversee the entire development process of a project, its realisation and subsequent management or marketing, providing a comprehensive service that takes the entire project life cycle into account.







TURNKEY CONSTRUCTION/  
PROJECT DEVELOPMENT

## DGNB GOLD CERTIFICATION

The turnkey **DMK Building** (Deutsches Milchkontor) is being constructed in the Airport City district of the Hanseatic city of Bremen and is being designed and built by the team from the Weser-Ems turnkey construction branch. Components and materials of the five-storey building are being processed with the aim of achieving DGNB Gold certification from the German Sustainable Building Council.



15

## TRUE TEAM EFFORT

The Berlin turnkey construction branch is constructing apartment blocks with a total of 35 residential units as well as a **residential complex** consisting of 59 houses. The spacious outdoor facilities and **civil engineering works** are being carried out by the Berlin transport infrastructure construction branch. An underground car park with around 180 parking spaces completes this extensive project.

## BEAUTIFUL LIVING

The **Pergolenviertel** is a newly planned residential quarter in the Hamburg-Nord district. The team from the Hamburg turnkey construction branch has been involved as general contractor in the construction of five residential ensembles since the end of 2017.



## MODERN ARCHITECTURE

“**Wohnen am Französischen Garten**” is a partnership project development with the participation of JOHANN BUNTE Bauunternehmung. On an inner-city site in Celle, Lower Saxony, the Hamburg turnkey construction branch is building 113 barrier-free flats with 93 underground parking spaces. The building is an extension of the “Hotel am Französischen Garten” hotel project.

Projects



BRIDGE CONSTRUCTION

# Best connections

Bridges span motorways, roads, railways and waterways, and are thus essential connections in transport infrastructure.

The bridge construction business area builds technically challenging standalone structures. From pedestrian bridges to viaducts, from new construction to refurbishment or repair, BUNTE realises impressive bridges using a wide range of construction techniques and materials.

Bridge construction work is extremely challenging for the executing teams, requiring extensive specialist know-how and equipment on the part of all those involved. The BUNTE team players master these challenges throughout Germany, pooling a multitude of success factors for their customers so that their reputation as recognised bridge builders always precedes them.



BRIDGE  
CONSTRUCTION



## REPLACEMENT CONSTRUCTION

To accommodate the new construction cross-section of the Dortmund-Ems Canal, it was necessary to replace the **Löringhoff Bridge** with a new bridge construction spanning 57 m realised by the IWB-Brückenbau branch.

## NEW ROADWAY

Our IWB-Brückenbau branch has almost completed the new construction of the **Gahmen road bridge** over the Datteln-Hamm canal in Lünen. The 81.10 m long tied-arch bridge was built next to the existing structure, which will be dismantled once the new bridge is in operation.



## STRONG GAP FILLERS

Every step is carefully orchestrated – as here during the **bridge construction** for the **A3 federal motorway** project. In Franconia, our perfectly coordinated bridge construction teams work hand in hand to always achieve the best result for the construction of a total of 90 bridge structures.





HYDRAULIC ENGINEERING

# Strong draught

BUNTE has been active in the hydraulic engineering business for over a century and is one of the leading hydraulic engineering companies in Germany. Its range of services includes the expansion of inland waterways, coastal and flood protection and building port facilities. Major contributions to the development of waterways and their utilisation make this an above-average field of activity, with a focus on construction activities such as dredging work, slope and base reinforcement and revetment work.

Drawing on a high level of experience, expansion of inland waterways is performed with standard or bespoke equipment and machinery that either floats on the water or is supported on land. The outstanding expertise of our employees, combined with specialised equipment, ensures that work is executed to the highest quality.



## EARTHWORKS ON LAND AND OVER WATER

A 3.3 km stretch of the Neckar river is to be renaturalised in time for the 2023 Federal Horticultural Show in Mannheim. The extensive earthworks are being carried out jointly by the IWB-Wasserbau and Frankfurt transport infrastructure construction branches. The **Neckar structural measures** will enhance and create new habitats for plants and animals.



## LAYING AND MAINTAINING LIFELINES

The Berlin transport infrastructure construction branch has laid 17,500 m<sup>2</sup> of asphalt as part of the **Königs Wusterhausen harbour expansion** project to construct a paved container storage area for empty containers at the inland harbour. In parallel, the team from the IWB branch has been commissioned with the harbour expansion.



## BYPASS

The Ems canal bridge carries the Dortmund-Ems canal over the river Ems. For the new construction of the **Ems canal bridge double-trough bridge**, the IWB-Wasserbau is building a **bypass section**. This requires 125,000 m<sup>3</sup> of dredging work during navigation to ensure that shipping services can be upheld while construction work is ongoing.

## REFURBISHMENT

To enable the handling of heavy cargo in the future, the IWB Ahaus and Hanover transport infrastructure construction branches are upgrading an existing berth in **Wittingen harbour** on the Elbe lateral canal, Lower Saxony. The existing berth is being refurbished with horizontally anchored sheet piles. In addition to sheet piling works in the canal and the harbour basin, road and track construction works are being carried out. The ground level in the transshipment area is also being levelled.





## TEAM PLAYERS

# Strong together

In 1872, a success story began on Hauptkanal in Papenburg that continues to this day. It is the result of people who have made the BUNTE family strong through their tireless efforts.

They are our shareholders, our industrial, technical and commercial employees at JOHANN BUNTE and our associated companies and, not to forget, our pensioners. It is thanks to all of them that BUNTE has been able to operate so successfully – for 150 years now. They all shape our company and make it so unique. Yesterday, today and tomorrow. Team players – across generations and companies.

Our employees are our greatest asset and the basis of our success. Their commitment, combined with experience, qualification and loyalty, gives us a decisive lead in the competitive market and forms the core of our future viability. In return, the BUNTE Group offers its employees first-class working conditions, fair pay, a secure workplace and excellent career prospects. Together with our long-term equity investments BUNTE-Logistik, BWE, R1, NWM and Siller, we achieve results and success – through pooled expertise combined with strong communication and cooperation capability.

Working together with our clients, planners, consultants, service providers, followers and other stakeholders, BUNTE turns construction work into teamwork.



TEAM PLAYERS

## OPEN TO NEW IDEAS

Whether with new colleagues, clients, subcontractors, researchers or partners – as **team players** we are always open to fresh contacts, new insights and modern technologies.



## WE LIKE TO CELEBRATE

Team players not only work together, they are also extremely communicative and love nothing better than a staff party. As here at the **tribute to those celebrating company anniversaries** and the **farewell to our retirees**. The highlight in 2022 was our big anniversary party.



## CROSS-CULTURAL COMPETENCE

At BUNTE, people from different cultural backgrounds work together constructively, productively and safely. As here during the **bridge construction** for the **A3 federal motorway** project.



## PARTNER OF CHOICE

Together with our clients and customers, we realise ground-breaking national and **international projects** in five business areas – as here in Denmark. With our uncompromising standards, the professional expertise of BUNTE's team players and a state-of-the-art pool of machinery and equipment.

Team Players



## STRONG TOGETHER

Good performance is always the result of teamwork. As here on the **NATO airfield** construction site in **Wittmundhafen**. Starting with the planning and cost calculation, to work in the workshop and realisation on site. As team players, our experienced and competent employees ensure everything goes according to plan, with a focus on quality and on-schedule execution to deliver outstanding solutions and results for our customers.

## TRAINING IS OUR COMMITMENT TO THE FUTURE

At BUNTE, we attach particular importance to training and promoting our own talented young employees – as shown here at this year's **certification ceremony**. They are an important part of our future sustainability. We currently offer training in 20 apprenticeship professions and three dual courses of study. Young women and men who graduate with us are always offered the opportunity to pursue their further career at BUNTE.

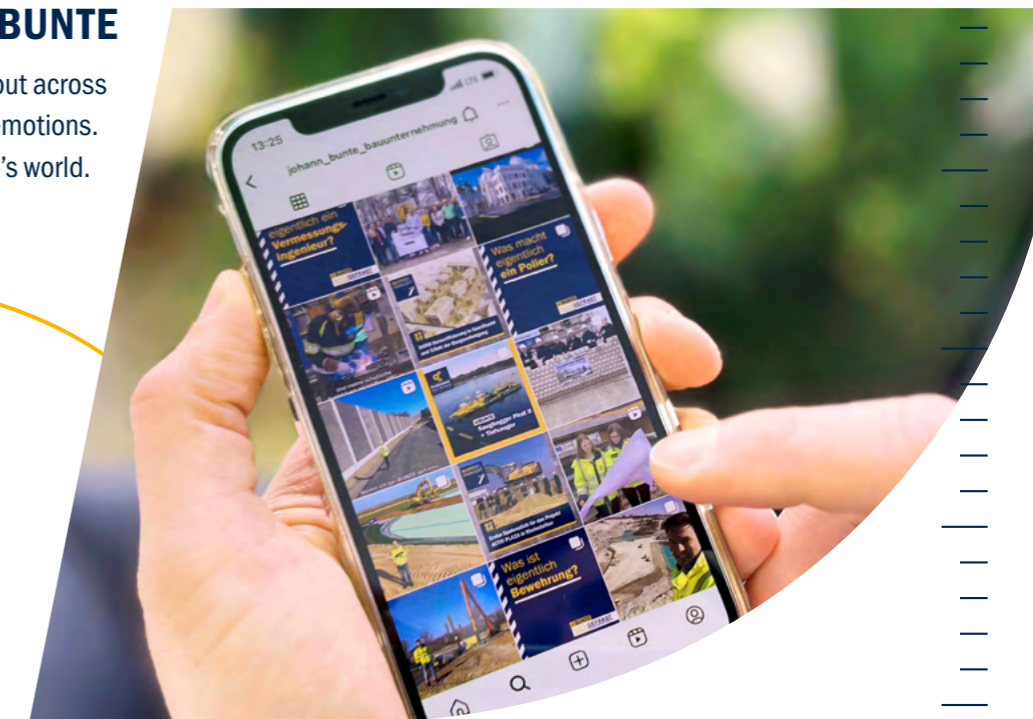


## PROSPECTS

As an employer, the BUNTE Group offers its employees excellent working conditions, security and interesting **career prospects**. For us, success is the result of a team effort. Our corporate culture is therefore characterised by cooperation, mutual support, sustainability, tolerance and diversity.

## #WIRSINDBUNTE

**Social media** – we reach out across generations: opinions, topics, emotions. For today's and tomorrow's world.







## NON-STOP ON THE ROAD

Within the BUNTE Group, **JOHANN BUNTE-Logistik GmbH** is responsible for all construction site logistics throughout Germany, including the transport of asphalt, equipment and construction machinery. With its own fleet of 180 trucks and around 200 employees, BUNTE-Logistik is on the road at a number of locations all over Germany with a total of around 600 vehicles every day.



## TWO PARTNERS, THIRTEEN LOCATIONS

In addition to its use in road construction, asphalt is also increasingly used in airport construction, hydraulic engineering and landfill construction. To ensure high production and delivery quality, BUNTE, with its long-term investee **NWM Nordwestdeutsche Mischwerke GmbH & Co. KG**, relies on the use of its own asphalt mixing plants.

## A STRONG TEAM

**R1 Verkehrstechnik** offers one-stop solutions for planning and implementing construction site safety and site traffic technology. Whether on country roads, national primary roads, motorways or in inner-city areas.



## SUSTAINABLY UNDERWAY

In addition to an extensive machinery pool, with **Siller Schüttgutlogistik GmbH** earthworks the Group has a handling and processing site for soils as well as a recycling plant for concrete and construction waste.





BUNTE HIGHLIGHTS

# 2022: Our anniversary year

What a year! JOHANN BUNTE – at home in Papenburg for 150 years. This is where everything comes together. We connect people across Germany, create urban living space and enable mobility. Ground-breaking, with our own modern machinery pool and our highly committed team players.

Alongside numerous activities to mark our 150th anniversary, we acquired and realised a large number of exciting projects in 2022 – across all business areas and branches. We rely on strong teams of professionals at all performance levels. An additional success factor is the cooperation that we have consistently been building up over the years – from project idea to implementation of the final construction measure.



## WELL-COORDINATED TEAMWORK

At the ground-breaking ceremony for the **B404**, which is to be widened to three lanes over a distance of 4 km, Hamburg transport infrastructure construction branch manager Jörg Hanzlik promised the client, Landesbetrieb Straßenbau und Verkehr Schleswig-Holstein (Schleswig-Holstein State Road Construction and Transport Authority), that the team would carry out the complete repair and asphalt surface rehabilitation, as well as the renewal of the drainage system, on schedule and in the accustomed high quality.



## BIG ARTWORK COMPETITION

As part of anniversary activities, we asked the offspring of our BUNTE team to get creative. The 12 best pictures were awarded a prize by a jury and published in the first **BUNTE wall calendar**. Copies of the calendar were sold at our anniversary party and the proceeds were donated to the Sozialer Ökohof St. Josef e. V. organic farm in Papenburg.



## ACTIVE ENGAGEMENT

The **tree planting campaign** grew out of the “BUNTE bewegt (sich)” campaign initiated in BUNTE’s anniversary year. In May, we focused particularly on the topics of sustainability and our health and explored the BUNTE world under the motto “BUNTE bewegt (sich)”. In the future, on an area of 21,000 m<sup>2</sup>, 150 fruit trees will grow tall.



## MILESTONES

While the **transverse launching of the bridge** on 13 January 2022 made engineering history, the bridge was officially opened to traffic on 6 December 2022. Since 2017, a 25.4 km section of the **A6 federal motorway** has been widened from two to three lanes in each direction without interrupting the traffic flow. In addition to the replacement of the Neckar valley crossing, at 1.3 km the longest motorway bridge in the federal state, 81 other structures, including overpasses and underpasses, passages, traffic sign gantries, noise barriers and rainwater retention basins were refurbished or constructed.



## CLEAR COMMON GOALS

At the ground-breaking ceremony, BUNTE's project development business area and the SF-Bau Hamburg branch officially launched their joint project in Celle. On a 3,360 m<sup>2</sup> site, a **Hampton by Hilton** hotel with 141 rooms and 50 parking spaces and adjacent to it 113 barrier-free **residential units** including an underground car park are being built.



## MEGAPROJECT

With the official opening of the new **Niederfinow Ship's Hoist** in October 2022, a structure of the century went into operation. The old hoist, in operation since 1934, no longer met modern shipping requirements, giving rise to the need for a new build. The new Niederfinow Ship's Hoist is 55 m high, 46 m wide and has a length of 133 m.

## LIVING BY THE PARK

Under the project name **"WIT"**, the turnkey construction branch in Berlin is building 133 new turnkey apartments, including outdoor facilities with underground parking and a small commercial unit, for HOWOGE Wohnungsbaugesellschaft mbH in the Marzahn-Hellersdorf district of Berlin.



## HIGHEST PRECISION

As part of the functional construction contract **A1 Lohne/Dinklage Interchange to Bramsche Interchange**, a 60 m long temporary bridge over the A1 federal motorway near Neuenkirchen-Vörden was lifted into place on one night in September by the team from the Osnabrück and IWB branches. This is one of 34 bridges for the 30 km long project section.



## FUNDRAISING CAMPAIGN

A further goal of the BUNTE Group is to assume its responsibility towards its employees and society. BUNTE sets a clear outward sign with its **social commitment** and supported selected associations and organisations across its network of branches throughout Germany in their work with a donation in the reporting year.

## WHERE IT ALL BEGAN

The first recorded contract for transport services dates back to Wednesday, **13 March 1872**. From then on, the transport operator Johann Bernhard Bunte, Papenburg – named after the company’s founder – transported sand, stones, wood and other materials as well as people within Papenburg and the surrounding area.



## PREMIERE

In May, JOHANN BUNTE Bauunternehmung’s project development and turnkey construction business area staged its own **trade fair appearance** at the Real Estate Arena 2022 in Hanover. The new real estate fair with around 100 exhibitors aims to focus with an innovative concept on the real estate markets in B and C locations.



## JOINT PROJECT

In August, JOHANN BUNTE was awarded the contract for construction of a new **control centre in Berlin-Grünau** by the Berlin Waterway Development Authority, which it is realising as a joint project in proven partnership between the turnkey construction and transport infrastructure construction branches in Berlin.





MANAGEMENT REPORT

# Excerpt from the Management Report

## Macroeconomic environment and industry development

The economic situation in Germany in 2022 was strongly influenced by the consequences of the Ukraine war, which overshadowed the effects of the occurrence of coronavirus infections and the accompanying protective measures. The ongoing war in Ukraine, international supply chain disruptions, higher interest rates and rising inflation are having multiple effects on the economy in general and on the construction industry in particular. According to the German Federal Statistical Office, gross domestic product, adjusted for prices, increased by 1.9% year on year (previous year: 2.7%) despite these general conditions.

The German Federal Statistical Office estimates that construction investment declined by -9.6% in real terms in 2022. At 12.3%, the proportion of GDP attributable to construction investment demonstrates the continued importance of the construction industry for the German economy.

The German building and construction industry closed 2022 with a price-adjusted decline in sales of -5.1%. This development was influenced strongly by the general conditions outlined above.

The demand for housing remained high through to mid-2022. Due to increasing construction costs, the trend in interest rates and an abrupt halt to KfW bank subsidies, the number of approved new dwellings fell sharply compared to the same period of the previous year. According to calculations by the German Federal Statistical Office, the price index for new housing construction rose by around 14% year on year. On the back of these general conditions, the construction industry association reported a 4.5% decline in price-adjusted sales in the residential construction sector.

In public construction, the small increase in approvals of 4.3% in the commercial sector in 2022 was caused exclusively by the significant increases in building prices; in real terms, however, the level of approvals declined by around 4.4%.

The annual average number of employees in the German building and construction trade increased by 15,000 (+1.7%) to around 927,000.

The 2030 German Federal Transport Infrastructure Plan, which involves a total investment volume of € 269.6 billion, remains in place and provides solid foundations for the construction industry. As previously, the majority of this figure relates to the expansion of federal highways, but investments in all significant infrastructure sectors (federal highways, federal waterways, federal railways, combined transport) are planned in the medium term.

In the medium term, the construction industry is demanding an additional €25 billion in annual investment from the federal government for transport infrastructure – rail, waterways and roads – in order to finance the reduction of the redevelopment backlog as well as investments in the future.

In its forecast for 2023, the Federation of the German Construction Industry anticipates a sales decrease of 6.2% in real terms as compared to 2022.

Sales in the residential construction segment are expected to decline by -9.0% for the 2023 financial year. This means that the target from the coalition agreement

with the scheduled construction of 400,000 apartments (2022: 275,000 dwellings completed) per year will not be met in 2023 either. This figure is expected to fall to 250,000 units in 2023.

With regard to public construction, the Federation of the German Construction Industry anticipates a decline in sales revenues of 6.2% as compared to the previous year. The federal government's investment in infrastructure will fall short of its own targets in the current year. As the largest public-sector client, municipalities are facing a sharp increase in their current material costs and personnel expenses in the coming years, which is not covered by the increase in projected tax revenues. Despite an undeniable need for investment in almost all construction sectors and at all local authority levels, public construction sales revenues are expected to decline by 5.0% in real terms in the current 2023 financial year.

Commercial construction is forecast to see a 4.4% loss of sales revenues in real terms for the reporting year. A further decline in commercial construction sales revenues of 4.0% is projected for 2023.

For 2023, based on the current general conditions, a nominal decline in construction industry sales revenues and a stagnating employment figure in the order of around 927,000 employees are assumed.

## Business areas

The BUNTE Group operates in the following business areas:

- Infrastructure construction**
- Turnkey construction/project development**
- Civil engineering**
- Hydraulic engineering**
- Bridge construction**

Within these business areas, BUNTE has a large number of diverse operating units. With its subsidiary JOHANN BUNTE-Logistik GmbH, Papenburg, the BUNTE Group has a highly capable transport logistics company with state-of-the-art vehicles that schedules, organises and executes all transportation tasks within the Group and on the market in a timely manner.

The BUNTE Group maintains a modern equipment pool that is regularly updated to the state of the art in terms of equipment and environmental technology and which, in conjunction with a large number of qualified blue-collar and white-collar employees, allows the Group to respond flexibly to the demands of the market. A high degree of vertical integration means that almost all of the services offered, with the exception of turnkey construction, can be performed using in-house resources.

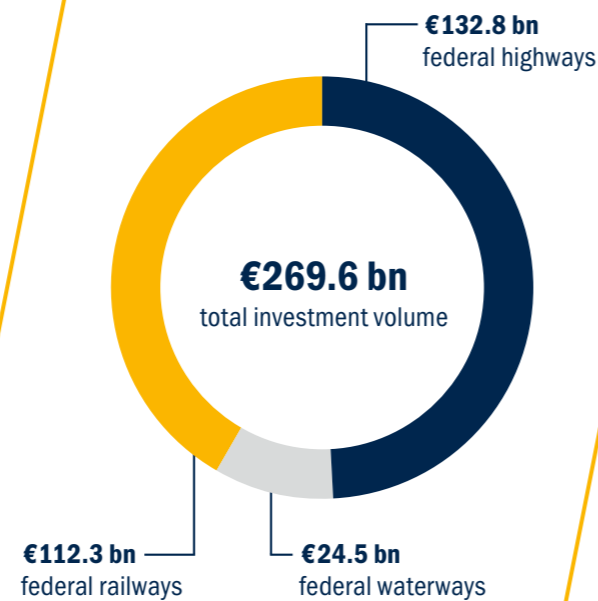
In 2022, the road construction business segment continued to boast a tightly-knit network of asphalt mixing plants and reinforced its regional market position in northern Germany via our equity interest in Nordwestdeutsche Mischwerke GmbH & Co. KG (NWM KG).

With our subsidiary Siller Schüttgutlogistik GmbH, the Group has access to a regional company specialising in the recycling and disposal of construction and other material in the Rhine-Main area.

BWE-Ingenieurgesellschaft mbH is making an important contribution to strengthening the turnkey construction and project development market segments with its planning offices for building technology in Nottuln (Münster) and Mittenwalde (Berlin).

R1 Verkehrstechnik GmbH is a reliable and competent partner specialised in making all manner of construction sites safe.

### 2030 German Federal Transport Infrastructure Plan



# 927,000

## employees in the building and construction trade

The expectations described take into account, to the extent that they are currently identifiable, the possible effects of the war in Ukraine and of the general economic conditions on the German construction industry. Nevertheless, the effects related to this are subject to corresponding uncertainties that cannot be quantified at present.

## Group management

The strategic alignment of the BUNTE Group is the basis for operational corporate management. A strategic multi-year plan has been prepared and operational targets defined for all areas in an effort to achieve the long-term strategic targets. These are followed up and analysed as part of an ongoing target/actual comparison. Important performance indicators include construction site results, the earnings structure of the business activities, gross revenue/sales, incoming orders or orders on hand and general business expenses. Gross revenue, orders on hand and consolidated net profit before taxes are considered to be the most important financial performance indicators. In addition, based on the analysis results, the key liquidity ratios are determined and control measures are developed on an ongoing basis. Concrete proposals for countermeasures are prepared for the management using deviation analyses. Management reporting that is geared towards the entire Group is an important tool for

measuring target achievement and initiated measures as well as important indicators for implementing the business strategy.

A structured risk management system is another core element of corporate management. Informative risk reports, construction site-specific process management for securing the process on the construction sites, quarterly meetings and management events help to identify risks early on and initiate countermeasures.

In addition to the elements mentioned above, the future-oriented topics of sustainability and digitalisation are enshrined in the current strategy for 2021-2025.

## Locations



- **Papenburg** (Head Office, transport infrastructure construction Weser-Ems, BUNTE-Logistik)
- **Ahaus** (Civil engineering, hydraulic engineering and bridge construction)
- **Berlin** (Transport infrastructure construction)
- **Berlin** (Turnkey construction)
- **Essen** (Transport infrastructure construction)
- **Frankfurt am Main** (Transport infrastructure construction)
- **Hamburg** (Transport infrastructure construction)
- **Hamburg** (Turnkey construction/project development)
- **Hanover** (Transport infrastructure construction)
- **Leer** (Turnkey construction/project development)
- **Nuremberg** (Transport infrastructure construction)
- **Oberhausen** (Turnkey construction/project development)
- **Osnabrück** (Transport infrastructure construction)
- **Stuttgart** (Transport infrastructure construction)
- **Stuttgart** (Turnkey construction)
- **Winsen (Luhe)** (Transport infrastructure construction)
- **Warsaw, Poland** (Transport infrastructure construction)
- **Darmstadt** (Siller)
- **Lingen** (R1)
- **Mittenwalde** (BWE)
- **Nottuln** (BWE)

## Sales and earnings development within the BUNTE Group

Despite the restrictions due to the effects of the war in Ukraine and the coronavirus pandemic, and in particular the resulting high prices for construction materials and raw materials, the BUNTE Group again enjoyed positive business development in 2022. The Group maintained its strong position at a high level in the current competitive environment despite sustained and intense competitive and price pressure. The gross revenue in accordance with German commercial law of €644.4 million was higher than forecast for 2022 and in excess of the prior-year level (€513.3 million).

Orders on hand amounted to €1,404 million at the end of the financial year and thus continued to be on a very high level. In addition to the PPP projects for the upgrade of the A3 federal motorway and the A1 federal motorway, orders on hand included a number of medium-sized projects.

In the past financial year, the BUNTE Group generated economic gross revenue of around €821.3 million (previous year: €667.3 million), which is €154.0 million higher than the previous year and slightly higher than forecast. Economic gross revenue also includes the revenue generated by the long-term investees included in the consolidated group and from third-party services by the asphalt mixing plants and the subsidiaries, as well as a pro

## Development of business of the BUNTE Group

BUNTE Group	2022	2021
	€ million	€ million
Gross revenue (Group)	821.3	667.3
Operating profit	49.0	39.5
HGB net profit before taxes	30.4	25.9

rata share of the deliveries and services performed in the genuine consortiums.

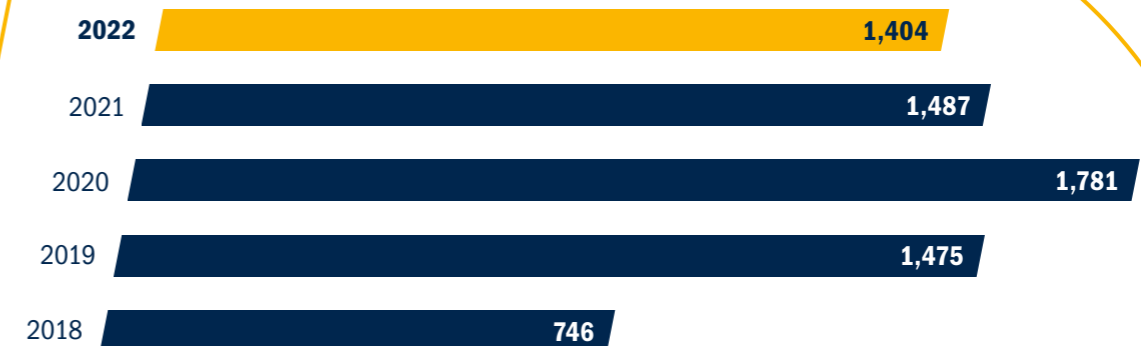
Construction services were provided in Germany and in a small part in Denmark. The Group recorded revenue growth in all of its core areas.

Consolidated net profit before taxes was €30.4 million and consolidated net income amounted to €20.8 million, which was higher than the previous year and the forecast for the financial year.

With the aim of continuously improving the BUNTE Group's earnings strength, project-related risks were adequately evaluated and taken into account in the processing of tenders and project execution, accompanied by integrated process and contract management. The Management Board will continue to pursue other initiatives to improve earnings, margins and revenue from construction services in future.

The BUNTE Group continued to enjoy extremely successful development in the 2022 financial year. In a highly

## Orders on hand in € million





competitive market, BUNTE achieved consolidated net profit for the year above that of the previous year while increasing Group revenue. The key financial performance indicators exceeded the underlying forecasts for the past financial year.

## Investment

In the year under review, the Group's investment volume was again concentrated on the continuous modernisation of equipment and investments in state-of-the-art technology across all business segments. A total of €26.6 million was invested in modernising equipment. The modernisation was financed in part via leasing and hire purchase agreements. Investments were made mainly in excavators, wheel loaders, road construction equipment, trucks, trailers, dumpers and hydraulic engineering equipment.

The Group also invested in the expansion and modernisation of its headquarters in Papenburg and the branches, the digitalisation process within the BUNTE Group and process optimisation. Thanks to the investments in the IT infrastructure made during this financial year and the previous years, the Group was well prepared to meet the challenges of the coronavirus pandemic. As a result, remote workplaces and IT applications for conducting meetings, negotiations and company-wide training in the form of video conferences could be provided at short notice. The ERP system that was rolled out in 2019 was expanded with the implementation of additional modules and functions aimed at optimising and digitalising business and construction processes. Another focal point was optimising construction processes in particular through the development of BIM processes (building information modelling) in infrastructure and turnkey construction.

To complete the range of services, the Group acquired a medium-sized traffic safety company, R1 Verkehrstechnik GmbH, based in Lingen, at the beginning of 2022. A further office is being established in Hamburg.

In order to further build up a sustainable portfolio for our in-house project development, we acquired additional land in promising locations and concluded further joint venture agreements with renowned project developers in 2022. To stabilise and increase revenue from construction services, the construction projects from this portfolio are realised via the turnkey construction business area.

## Financing

The BUNTE Group's equity amounted to €108.9 million. Construction projects are financed through regular prepayments from the clients. Liquidity needs that extend beyond this amount during the forecast period are covered by the Group bank balance, which was €127.0 million on 31 December 2022, and existing credit facilities.

## Sustainability

The BUNTE Group assumes sustained responsibility for the environment and climate action. Sustainability relating to economic, environmental and social aspects is an established and inherent part of BUNTE's corporate strategy.

In this, the BUNTE Group is guided by its own strategic goals, the climate targets of the German Federal Government and external guidelines such as the SDGs (sustainable development goals). The aim is to establish solution-oriented, sustainable measures in project business and within the Group and to implement them as part of the corporate culture. For example, the regular renewal of the vehicle fleet and the equipment pool, investments in advanced hybrid technology and the optimised deployment of employees and equipment all make an important contribution to protecting the environment.

GPS controlling for construction equipment and the expansion of lean management are further examples of our energy-efficient and environmentally friendly approach to work on our construction sites. This includes demand-driven production and transportation of asphalt and clock-controlled production in turnkey construction. The holistic approach to a construction project includes numerous interfaces between work areas when it comes to planning and structural work.

Digitalisation makes an important contribution to efficiently resolving interface problems and assists those responsible in making sustainable decisions over a structure's lifecycle. To communicate BIM processes with clients, planners, BIM managers and subcontractors optimally and in a way that conserves resources, the BUNTE Group is developing its own digital platforms and utilising existing digital platforms to collect, manage and share all project information between the project participants. In addition, the Group is optimising applications for the digitalisation of business processes, especially with a

view to procurement, human resources, equipment management and lean management processes.

Professional material flow management ensures the environmentally friendly optimisation of material flows both within and outside BUNTE with a focus on conserving energy and resources. Environmentally friendly order processing relies to a large extent on the efficient use of raw materials. When upgrading roads, for example, the removed roadbed is processed and prepared for reuse, and we are intensifying our efforts in this area with our equity interest in asphalt mixing plants. The production process saves energy by using the state-of-the-art parallel drum burner technology and conserves raw materials by using recyclable pavement material.

For a number of years now, the BUNTE Group has been developing practical test methods using the latest generation of dynamic test equipment at its dedicated asphalt technology station. Innovative binding agent concepts are researched and deployed and demands are placed on the performance characteristics of the asphalt mix in order to ensure a high-quality asphalt concept that is as long-lived as possible. Procedures for recycling asphalt granulate are also developed with a view to enabling the above-average reuse of recycled material.

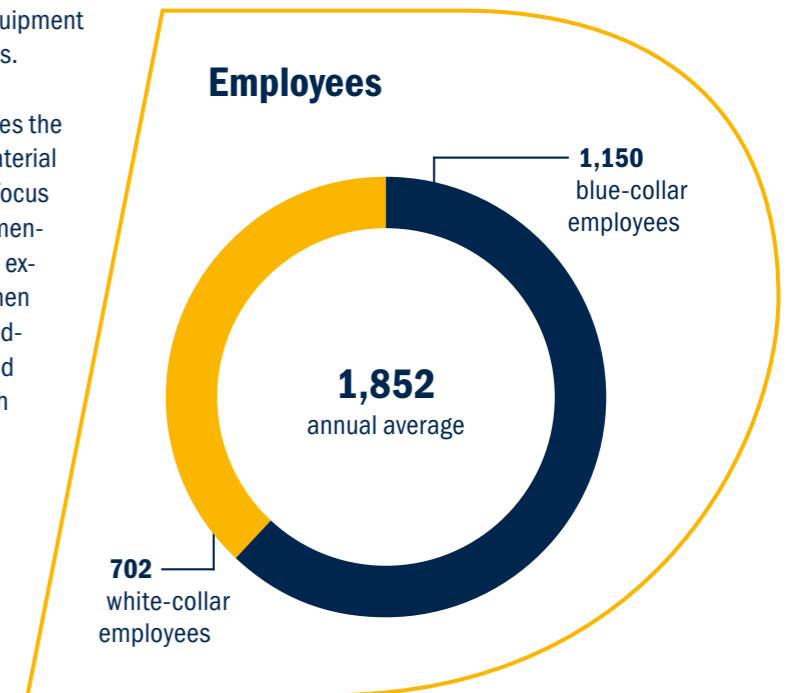
BUNTE's print media are also produced climate neutrally. In the coming years, the BUNTE Group will continue to systematically pursue the sustainability measures it has implemented and introduced in recent years.

The BUNTE Group's goals also include raising awareness of its responsibility towards its employees and society. BUNTE sets a clear outward sign with its social commitment by supporting selected associations and organisations across its network of branches throughout Germany in their work with a donation in the reporting year.

The wide range of measures in the area of sustainability is illustrated in the BUNTE sustainability report for 2022.

## Human resources

The BUNTE Group had an average of 1,852 employees (excluding trainees and interns) in 2022 (previous year: 1,755). This figure is composed of 1,150 blue-collar em-



ployees and 702 white-collar employees. The increase in the number of employees was due in particular to new hires on the back of the strong order situation, as well as to the acquisition of R1 Verkehrstechnik GmbH.

The BUNTE Group's favourable competitive position and successful business development is largely attributable to its employees.

Compared to the previous year, it was possible in 2022 to once again hold the majority of training courses as in-person events.

BUNTE had a total of 71 trainees and apprentices across 18 professions and two dual study programmes in 2022. They included industrial management assistants, forwarding and logistics services agents, office management assistants, IT specialists for system integration, industrial mechanics, mechatronics engineers for construction and agricultural machinery, civil engineering skilled workers, road construction engineers, plant mechanics, pipeline fitters, canal engineers, professional drivers, concrete and reinforced concrete specialists, warehouse logistics specialists, surveyors, draughters, construction materials inspectors and construction equipment operators, as well as Bachelor of Arts and Bachelor of Engineering students. BUNTE is continuing to focus on training young people in-house and has successfully participated in training fairs throughout Ger-

many for a number of years. Additionally, the BUNTE Group will continue to gradually expand its training programme. In the future, training programmes to qualify as a hydraulic engineer or real estate agent, as well as a dual course of study in business informatics are in the pipeline. Moreover, the BUNTE Group is cooperating with an increasing number of locations with regard to the dual course of study in building and civil engineering in order to continue to meet the demand for skilled workers.

## Training

in 18 professions and two dual study programmes

In light of the heightened internal and external requirements regarding modern HR work, BUNTE continued expanding the digital personnel file and implementing other digital HR processes in 2022 with a view to making its future HR activities more digital, more efficient and more sustainable.

JOHANN BUNTE Mitarbeiterbeteiligungs GmbH & Co. KG (Mitarbeiter-KG for short) also saw further growth in 2022. Mitarbeiter-KG had 726 limited partners by the end of the year (previous year: 714), bringing the ownership interest down to 39% (previous year: 41%). Thanks to the good business results in the previous year, the limited partners again received a rate of return that at 12.955% was well above the current market conditions.

In summer 2022, the first cohort of trainees successfully completed the programme launched in 2021. The graduates were given a comprehensive insight into the business areas, processes and construction services, and in accompanying targeted training and seminars were prepared for their future tasks supporting the turnkey construction business area at the Hamburg and Berlin locations, as well as contract management.

In the past year, two employees celebrated 45 years of service, three employees celebrated 40 years of service, 12 employees celebrated 25 years of service, and 39 celebrated 10 years of service.

## Occupational health and safety

Sustained reduction of the Lost Time Injury Frequency Rate (LTIFR) is a target value set by the Management Board as part of its future-oriented strategy. To achieve this, it is necessary to establish occupational health and safety in the corporate philosophy in order to heighten safety awareness and sensitivity with regard to the topic.

Two building blocks aimed at making occupational health and safety more present were, for example, regular site visits and safety inspections together with the construction site teams. To this end, two occupational health and safety specialists joined the occupational health and safety team in the summer. Oversight of the branches and their construction sites is now divided into North-West and South-East, so that each construction site has a fixed contact for occupational health and safety.

Furthermore, the summer brought the first edition of the BUNTE safety newsletter. This primarily serves to support the construction sites and provides information on current topics, special instruction templates or accident reports. With the newsletter distributed throughout the company, information is thus disseminated directly to the construction sites.

In the summer of 2022, the pipe, plant and cable fitting business unit was successfully SCL-certified for the first time. Achieving Safety Culture Ladder (SCL) certification represents a major success for BUNTE. This is on the one hand because only a few construction companies in Germany have been certified in accordance with it, and on the other hand, because it fulfils the requirements of TenneT TSO GmbH for contractors and nothing more stands in the way of future civil engineering projects for the construction of high-voltage transmission grids. Likewise, our occupational health and safety management was successfully re-audited in accordance with DIN ISO 45001.

## Covid-19-related measures

The company continues to implement targeted measures based on regulatory requirements to ensure that the impact of Covid-19 is minimised for both employees and the company.

## Research and development

In the area of research and development, the Group is currently addressing the following focal points to a limited extent:

In an effort to optimise the communication of the BIM processes with clients, planners and BIM managers as well as with subcontractors, BUNTE is developing its own platforms for collecting and managing all project information as far as possible in the future, and for sharing and adding content between the project participants and, in some cases, with existing platforms. These platforms will provide scatter plots from the laser scan images (actual state) and the IFC model data (target state) to all project participants with the aim of optimising the execution of construction work.

In cooperation with IT companies, BUNTE is also developing and optimising its applications for the digitalisation of business processes, especially with a view to procurement, human resources, equipment management and lean management processes.

For PPP projects in particular, BUNTE's dedicated asphalt technology station has been conducting research on and developing practical test methods for many years now, using the latest generation of dynamic test equipment. Innovative binding agent concepts are researched and deployed and demands are placed on the performance characteristics of the asphalt mix in order to ensure an asphalt concept that is as long-lived as possible ("performance asphalt"). Civil engineering concepts for the efficient installation of a high-quality and hard-wearing roadbed for open-pored asphalt were also developed and continuously optimised specifically for PPP projects. The BUNTE asphalt technology station is also developing processes for recycling asphalt granulate which, given careful asphalt granulate management, will enable the above-average reuse of recycled material without negative effects on the performance characteristics and without quality defects.

## Forecast report

Subject to available information, the forecast report as far as possible considers the impacts of the war in Ukraine and the coronavirus pandemic.

The war in Ukraine is expected to continue to impact on the business development of the BUNTE Group overall.

Despite the current general conditions and the negative forecasts of the Central Association of the German Construction Industry (Zentralverband des Deutschen Baugewerbes e.V.), the BUNTE Group is optimistic with regard to the 2023 financial year and is forecasting economic gross revenue in the region of €800 million, assuming that construction activity is not more substantially affected by the war in Ukraine. This is supported by the high level of orders on hand, which will to some extent be reduced in 2023, and the projected construction investment volume in the key market segments for BUNTE. The orders on hand are distributed evenly across all business areas. Building on its strategic objective of acting as a general contractor on the market while ensuring that its day-to-day operations are characterised by innovative solutions, high quality, contract fulfilment and on-time delivery, BUNTE will continue to enjoy robust earnings potential in future.

The foundations for the Group's stability are provided by a high level of orders on hand, which as at 31 December 2023 is expected to be slightly lower compared to the previous year, its highly qualified, motivated and flexible employees, and shareholders with a vested interest in sustainable business development who support the corporate policy.

The Group's continued strategic aim will be to expand the market position it has achieved and thereby further increase the profit margin as a company that operates independently in almost all construction segments. Concrete measures were stipulated in the Group's strategy paper for 2021-2025.

On the basis of the aforementioned general conditions, the Group expects the profit and financial situation to remain stable, not taking into account the effects of the war in Ukraine to be assessed at the time. Provided that the planned revenue from construction services is earned, the Management Board is expecting earnings before tax to be at the level of the previous year. Depending on the development and duration of the war in Ukraine, a negative impact on the 2023 financial year cannot be ruled out.



ANNUAL FINANCIAL STATEMENTS

# Consolidated balance sheet, consolidated income statement



# Consolidated balance sheet

as at 31 December 2022

ASSETS in €		
Rudolf Bunte Beteiligungs-SE, Papenburg	31.12.2022	31.12.2021
<b>A. Fixed assets</b>		
<b>I. Intangible fixed assets</b>		
1. Purchased concessions, industrial and similar rights and assets	898,800.33	1,030,507.49
2. Goodwill	2,519,700.43	2,107,061.21
3. Prepayments	0.00	227,604.78
	<b>3,418,500.76</b>	<b>3,365,173.48</b>
<b>II. Tangible fixed assets</b>		
1. Land, land rights and buildings, including buildings on third-party land	18,758,603.62	15,315,426.53
2. Technical equipment and machinery	26,060,388.03	20,785,085.40
3. Other equipment, operating and office equipment	6,869,729.98	5,748,545.75
4. Prepayments and assets under construction	184,931.10	53,275.00
	<b>51,873,652.73</b>	<b>41,902,332.68</b>
<b>III. Long-term financial assets</b>		
1. Shares in affiliated companies	25,000.00	25,000.00
2. Shares in associates	12,358,760.20	10,361,002.30
3. Other long-term equity investments	1,267.58	1,267.58
4. Long-term securities	750.00	0.00
5. Other loans	40,676.96	43,200.00
	<b>12,426,454.74</b>	<b>10,430,469.88</b>
	<b>67,718,608.23</b>	<b>55,697,976.04</b>
<b>B. Current assets</b>		
<b>I. Inventories</b>		
1. Sand deposits	3,443,202.16	3,714,966.32
2. Raw materials, consumables and supplies	3,358,926.32	2,451,163.95
3. Work in progress	467,241,661.10	367,170,956.19
4. Payments received on account of orders	-467,241,661.10	-367,170,956.19
5. Merchandise	34,473.95	0.00
	<b>6,836,602.43</b>	<b>6,166,130.27</b>
<b>II. Receivables and other assets</b>		
1. Trade receivables	139,624,301.76	120,242,706.94
2. Receivables from affiliated companies	4,323.71	4,324.09
3. Receivables from associates	12,171,422.22	5,122,830.95
4. Other assets	12,868,677.14	10,266,799.14
	<b>164,668,724.83</b>	<b>135,636,661.12</b>
<b>III. Cash-in-hand and bank balances</b>	<b>127,041,783.60</b>	<b>128,190,330.50</b>
	<b>298,547,110.86</b>	<b>269,993,121.89</b>
<b>C. Prepaid expenses</b>	<b>317,568.31</b>	<b>307,207.13</b>
<b>D. Deferred tax assets</b>	<b>1,760,609.94</b>	<b>1,669,283.43</b>
	<b>368,343,897.34</b>	<b>327,667,588.49</b>

EQUITY AND LIABILITIES in €		
Rudolf Bunte Beteiligungs-SE, Papenburg	31.12.2022	31.12.2021
<b>A. Equity</b>		
I. Subscribed capital	306,940.00	15,347,000.00
II. Capital reserves	86,288,103.87	4,294,851.80
III. Revenue reserves	0.00	20,354,225.65
IV. Consolidated net retained profits	6,672,190.13	46,164,796.55
V. Adjustment item for foreign currency translation	8,939.20	1,318.31
VI. Non-controlling interests	15,653,651.20	15,109,268.55
	<b>108,929,824.40</b>	<b>101,271,460.86</b>
<b>B. Provisions</b>		
1. Provisions for pensions and similar obligations	4,820,162.19	3,757,878.00
2. Provisions for taxes	2,371,069.67	627,530.51
3. Other provisions	92,279,311.00	63,115,396.86
	<b>99,470,542.86</b>	<b>67,500,805.37</b>
<b>C. Liabilities</b>		
1. Liabilities to banks	8,026,484.47	9,788,540.65
2. Payments received on account of orders	22,233,087.35	29,472,525.02
3. Trade payables	28,579,759.32	26,574,671.83
4. Liabilities to limited partners of JOHANN BUNTE Bauunternehmung SE & Co. KG	19,630,782.42	17,203,754.33
5. Liabilities to associates	3,512,403.37	1,369,977.12
6. Other liabilities	73,277,441.09	74,485,853.31
	<b>155,259,958.02</b>	<b>158,895,322.26</b>
<b>D. Deferred income</b>	<b>4,683,572.06</b>	<b>0.00</b>
	<b>368,343,897.34</b>	<b>327,667,588.49</b>

## Consolidated income statement

for the period from 1 January to 31 December 2022 in €

Rudolf Bunte Beteiligungs-SE, Papenburg	2022	2021
1. Sales	548,164,477.56	502,647,334.43
2. Increase in work in progress	96,205,322.81	10,631,472.66
3. Other operating income	12,096,988.79	16,924,947.22
4. Cost of materials		
a) Cost of raw materials, consumables and supplies and of purchased merchandise	147,934,558.01	107,077,197.86
b) Cost of purchased services	258,151,666.15	217,102,696.36
5. Personnel expenses		
a) Wages and salaries	109,570,300.70	100,258,641.25
b) Social security, post-employment and other employee benefit costs	33,492,958.61	29,195,520.53
6. Depreciation, amortisation and write-downs	10,301,473.28	8,506,831.02
7. Other operating expenses	69,493,076.62	40,456,453.84
8. Income from long-term equity investments	199,328.31	856.32
9. Net income/net loss of associates	975,737.58	-1,274,410.08
10. Income from long-term loans	775.00	0.00
11. Other interest and similar income	2,424,961.66	256,708.38
12. Interest and similar expenses	693,112.35	732,869.25
<b>13. Net profit before taxes</b>	<b>30,430,445.99</b>	<b>25,856,698.82</b>
14. Taxes on income	9,102,540.53	6,925,608.14
<b>15. Net profit after taxes</b>	<b>21,327,905.46</b>	<b>18,931,090.68</b>
16. Other taxes	542,540.97	622,123.47
<b>17. Consolidated net income for the year</b>	<b>20,785,364.49</b>	<b>18,308,967.21</b>
18. Profit attributable to non-controlling interests – credit to shareholder accounts of the limited partners of JOHANN BUNTE Bauunternehmung SE & Co. KG	-12,379,752.21	-11,603,764.79
19. Dividends paid	-1,534,700.00	-1,534,700.00
20. Consolidated accumulated losses brought forward (previous year: consolidated retained profits brought forward)	-198,722.15	40,994,294.13
<b>21. Consolidated net retained profits</b>	<b>6,672,190.13</b>	<b>46,164,796.55</b>

## Executive bodies

### MANAGEMENT BOARD

Dipl.-Ing. Frank Schreiber, CEO  
 Dipl.-Ing. Helmut Renze, Deputy CEO  
 Dipl.-Ing. Helmut Bohse  
 Dipl.-Ing. Andreas Broll  
 Dipl.-Kfm. Jan Schütz

### SUPERVISORY BOARD

Dr. Lorenz Zwingmann, Chair  
 Dr. Bernd Eikens  
 Prof. Dr. Stephan Eilers  
 Jens Korten

## Our locations

### Papenburg Head Office

Hauptkanal links 88  
26871 Papenburg  
Tel. +49 (0) 4961 895-0  
papenburg@johann-bunte.de  
www.johann-bunte.de

### Branches

#### Civil engineering, hydraulic engineering and bridge construction

Von-Röntgen-Straße 8  
48683 Ahaus

#### Transport infrastructure construction Berlin

Hans-Grade-Straße 2  
16515 Oranienburg

#### Turnkey construction Berlin

Richard-Willstätter-Straße 14  
12489 Berlin-Adlershof

#### Transport infrastructure construction Essen

Teilungsweg 28  
45329 Essen

#### Transport infrastructure construction Frankfurt am Main

Kleiner Kornweg 38  
65451 Kelsterbach

#### Transport infrastructure construction Hamburg

Waldweg 2  
22145 Braak

#### Turnkey construction Hamburg

Sachsenstraße 11  
20097 Hamburg

#### Transport infrastructure construction Hanover

Hägenstraße 1  
30559 Hannover

#### Transport infrastructure construction Nuremberg

Thurn-und-Taxis-Straße 24  
90411 Nürnberg

#### Transport infrastructure construction Osnabrück

Am Schürholz 6  
49078 Osnabrück

#### Turnkey construction Rhine-Ruhr

Europaallee 1  
46047 Oberhausen

#### Transport infrastructure construction Stuttgart

Gottlieb-Manz-Straße 1  
70794 Filderstadt

#### Turnkey construction Stuttgart

Gottlieb-Manz-Straße 1  
70794 Filderstadt

#### Transport infrastructure construction Winsen (Luhe)

Zum Torfmoor 5  
21423 Winsen (Luhe)

#### Transport infrastructure construction Weser-Ems

Hauptkanal links 88  
26871 Papenburg

#### Turnkey construction Weser-Ems

Hafenstraße 2a  
26789 Leer

### Subsidiaries

#### JOHANN BUNTE-Logistik GmbH

Hauptkanal links 88  
26871 Papenburg

#### BWE-Ingenieurgesellschaft mbH

Hanns-Martin-Schleyer-Straße 4  
48301 Nottuln

#### Siller Schüttgutlogistik GmbH

Mainzer Straße 100  
64293 Darmstadt

#### BUNTE Polska SP. Z O.O.

ul. Radunska 6  
PL-01-681 Warszawa

#### NWM Nordwestdeutsche Mischwerke GmbH & Co. KG

Vechtaer Straße 35  
26197 Großenkneten

#### R1 Verkehrstechnik GmbH

Schüttelsand 18+19  
49808 Lingen (Ems)

### Asphalt mixing plants

#### Ahlhorn

Vechtaer Straße 35  
26197 Großenkneten

#### Emsbüren

Mendelstraße 1  
48488 Emsbüren

#### Engter

Igels Sand 9  
49565 Bramsche-Engter

#### Georgsheil/Aurich

Gewerbestraße  
26624 Südbrookmerland

#### Getmold

Hafenstraße 21  
32361 Pr. Oldendorf

#### Halle (Westfalen)

Hesseltal 14  
33790 Halle (Westfalen)

#### Hamburg Peute

Peutestraße 75  
20539 Hamburg

#### Kampe

Industriestraße 28  
(Röbkenberg)  
26169 Kampe

#### Mühbrook

Am Mühbrook Meer  
24582 Mühbrook

#### Papenburg

Industriehafen Süd 8  
26871 Papenburg

#### Süsel

Bujendorfer Landstraße  
23701 Süsel

#### Winsen (Luhe)

Daimlerstraße 6  
21423 Winsen (Luhe)

#### Wilhelmshaven

Zum Neuen Hafentor 11  
26384 Wilhelmshaven

## Publication details

### Publisher

JOHANN BUNTE Bauunternehmung SE & Co. KG  
Osnabrück Local Court, HRA 120822  
Personally liable partner:  
Rudolf Bunte Beteiligungs-SE,  
Osnabrück Local Court HRB 217850

Hauptkanal links 88

26871 Papenburg

Germany

Tel. +49 (0) 4961 895-0

E-mail: papenburg@johann-bunte.de

www.johann-bunte.de

### Concept and design

KorteMaerzWolff Kommunikation, Hamburg

### Realisation

JOHANN BUNTE Bauunternehmung

### Text

JOHANN BUNTE Bauunternehmung

### Sources

Figures for the construction industry:

German Federal Statistical Office

Page 42, Federal Transport Infrastructure Plan:

Federal Ministry for Digital and Transport

### Printing

BerlinDruck, Achim

### Photo credits

Titel: BUNTE employees

Page 1: BUNTE ship christening "Tobina"

Page 15, bottom: HIGHSTREET DESIGN GmbH

Page 31, bottom: Siller

Page 35, bottom: ViA6West

Page 36, bottom: Sweco GmbH

Page 39, bottom: WNA Berlin


All other images: JOHANN BUNTE Bauunternehmung

Reports in working groups are not noted separately.

As at April 2023

At BUNTE, it is important to us that each and every individual feels included. At the same time, our texts should be readily understandable and easy to read. We have therefore decided to use inclusive and gender-neutral forms to refer to all genders.





**JOHANN BUNTE**  
Bauunternehmung SE & Co. KG  
Hauptkanal links 88  
26871 Papenburg  
[www.johann-bunte.de](http://www.johann-bunte.de)